



# CONCERTO™

The Concerto Series is a stunning take on an already brilliant innovation. One part workhorse, one part museum piece, this new monitor arm continues in the fine tradition of its predecessor and builds on a sterling reputation.



**HORIZON™**  
FURNITURE

# MONITOR ARM SUPPORTS

Concerto includes the following standard features for different configurations;

- VESA mounting plate contains 75 mm and 100 mm mounting configuration
- VESA plate head is fully adjustable with 180° of tilt, 180° of swivel and 360° of rotation for portrait to landscape viewing
- Counterbalance spring mechanism does not contain gas cylinders
- Cable management provided
- Arm components manufactured from 100% recyclable die cast aluminum material
- 12" arm height adjustment on the stainless steel pole
- Clamp and grommet mount
- Monitor arms available in Silver (standard colour)
- White, black or polished finish available by special order
- Holds 20 lbs. per monitor

BIFMA  
TESTED



All models include  
**QUICK MOUNT  
MONITOR CONNECTOR**



## FSP-05

- Direct mount
- Holds 20 lbs.

**FSP-05**



## FSP-10

- Single segment with a 9½" reach from centre of pole to front of VESA plate
- Display viewing; 180° of tilt, 180° of swivel and 360° of rotation
- Holds 20 lbs.

**FSP-10**



## FSP-10HA

- "HA" adds a fingertip height adjustable monitor arm which is counterbalanced
- Monitor height adjustment range from 3" to 12" from the worksurface
- Holds 20 lbs.

**FSP-10HA**



## FSP-15

- Dual segment with a 9½" reach from centre of pole to front of VESA plate
- Display viewing; 180° of tilt, 180° of swivel and 360° of rotation
- Holds 20 lbs.

**FSP-15**

## FSP-15HA

- 12" reach
- "HA" adds a fingertip height adjustable monitor arm which is counterbalanced
- Monitor height adjustment range from 3" to 12" from the worksurface
- Holds 20 lbs.

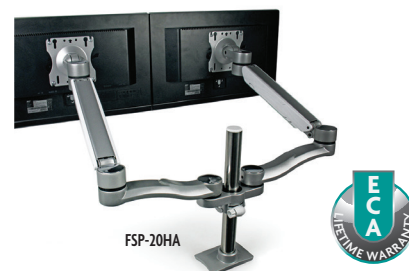
**FSP-15HA**



## FSP-20

- Dual screen, two segments with a 19" extension from centre of pole to front of VESA plate
- Display viewing; 180° of tilt, 180° of swivel and 360° of rotation
- Max of 39" width per monitor
- Holds 20 lbs. per monitor

**FSP-20**



## FSP-20HA

- "HA" adds a fingertip height adjustable monitor arm which is counterbalanced
- Monitor height adjustment range from 3" to 12" from the worksurface
- Max of 39" width per monitor
- Holds 20 lbs. per monitor

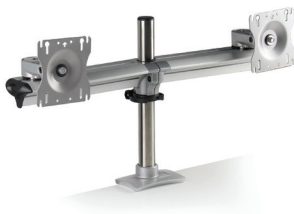
**FSP-20HA**

**HORIZON**  
FURNITURE

# MONITOR ARM SUPPORTS

Concerto includes the following standard features for different configurations;

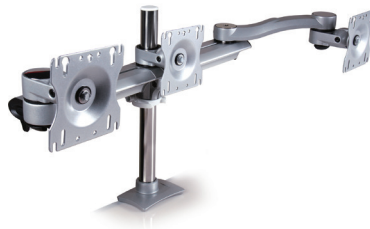
- VESA mounting plate contains 75 mm and 100 mm mounting configuration
- VESA plate head is fully adjustable with 180° of tilt, 180° of swivel and 360° of rotation for portrait to landscape viewing
- Cable management on arm swivel joints and pole support ring
- Arm components manufactured from 100% recyclable die cast aluminum material
- 24" single or dual beam mounts
- 360° of beam swivel around pole
- Clamp and grommet mount included
- Monitor arms available in Silver (standard colour)



## FSB-25

- Dual screen beam mount
- 16" pole height adjustment
- Max of 21" width per monitor
- Available in Black or Silver

FSB-25



## FSB-30

- One direct mount and two extension segments
- 16" pole and 24" beam
- Max of 18.5" width per monitor
- Available in Black or Silver

FSB-30



## FSB-40

- One single beam with four VESA plates
- Two single extensions at the ends can be swung out for other users
- Two direct mounts
- 16" pole and 48" beam
- Max of 16" width per monitor
- Available in Silver only

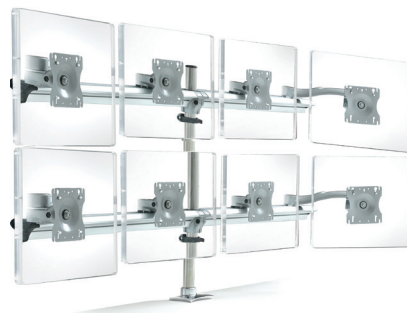
FSB-40



## FSB-45

- Two beams, two rows with two VESA plates each
- Four direct mounts
- 30" pole and dual 24" beam
- Max of 21" width per monitor
- Available in Black or Silver

FSB-45



## FSB-80

- Four beams, two rows with four VESA plates each
- Four single extensions at the ends can be swung out for other users
- Four direct mounts
- 30" pole and 48" beam
- Max of 16.75" width per monitor
- Available in Silver only

FSB-80

# CONCERTO ARM COMPONENTS



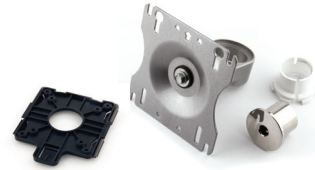
Pole package:  
Includes base, with clamp and grommet mount, allen keys, pole and cap.

- 7801AS12** 12" pole
- 7801AS16** 16" pole
- 7801AS30** 30" pole



Monitor mount package:  
Includes monitor mount, trim cap, support ring, pole bushing, hardware and quick connect adapter bracket.

**7801BS**



Beam monitor mount package: Includes monitor mount, trim cap, support ring, beam bushing, hardware and quick connect adapter bracket.

**7801CS**



Beam package:  
Includes two beam segments.

- 7801GS24** 24", two 12" beams
- 7801GS32** 32", two 16" beams
- 7801GS48** 48", two 24" beams



Wall mount component package:  
3.5" hole centres. Wall mount brackets on 2" beam section. End caps and allen keys.  
(For monitor mount order 7801CS).

**7801MS0350**



Adjustable slat wall mount component package:  
Includes adjustable slat wall brackets on 2" beam section, end caps and allen keys. (For monitor mount order 7801CS).

**7801NS0200**



Keyboard tray mounting package:  
Includes one extension arm with rigid hub components, adapter bracket, tray mounting hardware and pole bushing with support ring.

**7801RS**



B = Black



S = Silver



W = White



P = Polished

To specify colour other than silver, please replace the "S" in the part number.

# CONCERTO ARM COMPONENTS



## Pole Mount Extension Arms



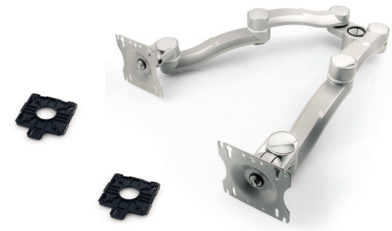
Double extension arm package for pole:  
Two extension arms assembled with  
monitor mount and quick connect  
adapter bracket.

**7801VS**



Double extension arm package for pole:  
One extension arm and one height adjustable  
segment assembled with monitor mount and  
quick connect adapter bracket.

**7801VSH**



Dual hub extension arm package for pole:  
Two double extension arms, each assembled with its  
own monitor mount, joined together with the dual hub.  
Includes two quick connect adapter brackets.

**7801VSD**



Single extension arm package for pole:  
One extension arm assembled with monitor  
mount and quick connect adapter bracket.

**7801XS**



Single height adjustable arm package for pole:  
One extended height adjustable segment  
assembled with monitor mount and quick  
connect adapter bracket.

**7801XSH**



Double extension "Extended" arm package for pole:  
One extended length fixed segment and one extended  
height adjustable segment assembled with monitor  
mount and quick connect adapter bracket.

**7807VSH**



B = Black



S = Silver



W = White



P = Polished

To specify colour other than silver, please  
replace the "S" in the part number.

# CONCERTO ARM COMPONENTS



## Beam Mount Extension Arms



Double extension arm package for beam:  
Two extension arms assembled with  
monitor mount and quick connect  
adapter bracket.

**7801WS**



Double extension arm package for beam:  
One extension arm and one height adjustable  
segment assembled with monitor mount and  
quick connect adapter bracket.

**7801WSH**



Single extension arm package for beam:  
One extension arm assembled with monitor  
mount and quick connect adapter bracket.  
Monitor mount under extension arm.

**7801YUS**



Single height adjustable arm package for beam:  
One extended height adjustable segment  
assembled with monitor mount and quick  
connect adapter bracket.

**7801YSH**

	B = Black		S = Silver
	W = White		P = Polished

To specify colour other than silver, please  
replace the "S" in the part number.

## Concerto Accessories



Laptop support. Silver finish. Standard  
VESA mounting/hardware included. 2" thick  
opening, non-slip contact surface, built in  
grab handle.

**7801TS**



Laptop support with document holder. Silver fin-  
ish. Standard VESA mounting/hardware included.  
2" thick opening, non-slip contact surface, built in  
grab handle. Quick and simple installation.

**7801TDS**



Document holder. Stable linear design. Silver  
finish. Mounts between monitor and Concerto  
monitor mounting plate. Finger adjustable,  
supports various document widths.

**7902S**